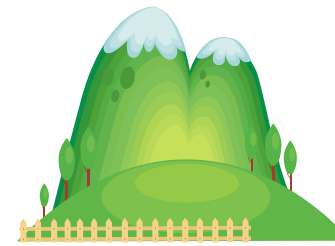




KCR/WORKSOURCE AFFILIATE
 1211 BAY ST PORT ORCHARD WA 98366
 (360)473-2144



August
 2011



CLIENTS MUST SIGN UP AHEAD OF TIME

MONDAY	TUESDAY	WEDNESDAY	THURSDAY	FRIDAY
1 <u>1:00pm-3:00pm</u> CHART Workshop	2 <u>9:00am-12:00pm</u> #4 Perfecting Applications	3 <u>1:00pm-4:00pm</u> Resume Development Lab	4 <u>9:00am-12:00pm</u> #5 Cover Letters/Resumes <u>9:00am-12:00pm</u> Intro to Excel	5 <u>10:00am-10:45am</u> WIA Orientation
8	9 <u>9:00am-12:00pm</u> #6 Interviewing Techniques <u>2:00pm-3:00pm</u> ERS Class	10 <u>1:00pm-4:00pm</u> Resume Development Lab	11 <u>9:00am-12:00pm</u> #2 Skills/Abilities Analysis <u>5:30pm-7:00pm</u> Financial Awareness Class	12 <u>10:00am-10:45am</u> WIA Orientation
15	16 <u>9:00am-12:00pm</u> #3 Job Search Strategies	17 <u>1:00pm-4:00pm</u> Resume Development Lab <u>3:00pm-3:30pm</u> Pathways Orientation	18 <u>9:00am-12:00pm</u> #4 Perfecting Applications <u>9:00am-1:00pm</u> Intro to PowerPoint <u>1:00pm-5:00pm</u> Intro to Word	19 <u>10:00am-10:45am</u> WIA Orientation ***Closing at 11am
22	23 <u>9:00am-12:00pm</u> #5 Cover Letters/Resumes <u>2:00pm-3:00pm</u> ERS Class	24 <u>1:00pm-4:00pm</u> Resume Development Lab	25 <u>9:00am-12:00pm</u> #6 Interviewing Techniques <u>9:00am-1:00pm</u> Intro to Excel	26 <u>10:00am-10:45am</u> WIA Orientation
29	30 <u>9:00am-12:00pm</u> #2 Skills/Abilities Analysis	31 <u>1:00pm-4:00pm</u> Resume Development Lab		

South Kitsap WorkSource Affiliate is an equal opportunity provider of employment and training services. Auxiliary aids/services are available upon request to persons with disabilities. Dial 711 for the Washington Relay service.